

Boynton Waters West I

AT LAKES OF BOYNTON BEACH PUD - POD C

Situate in Sections 21 and 22, Township 45 South, Range 42 East
Being a replat of all of Tracts 24, 25, 26, 27, 30, and a portion of Tracts 16
through 23, 28 and 29, 31 through 33, and 36 through 39, Block 48, and the
adjacent abandoned roadways, Palm Beach Farms Company Plat No. 3 as recorded

in Plat Book 2, Page 45 through 54, inclusive, Public Records of Palm Beach County, Florida

July, 1996

GRAPHIC SCALE

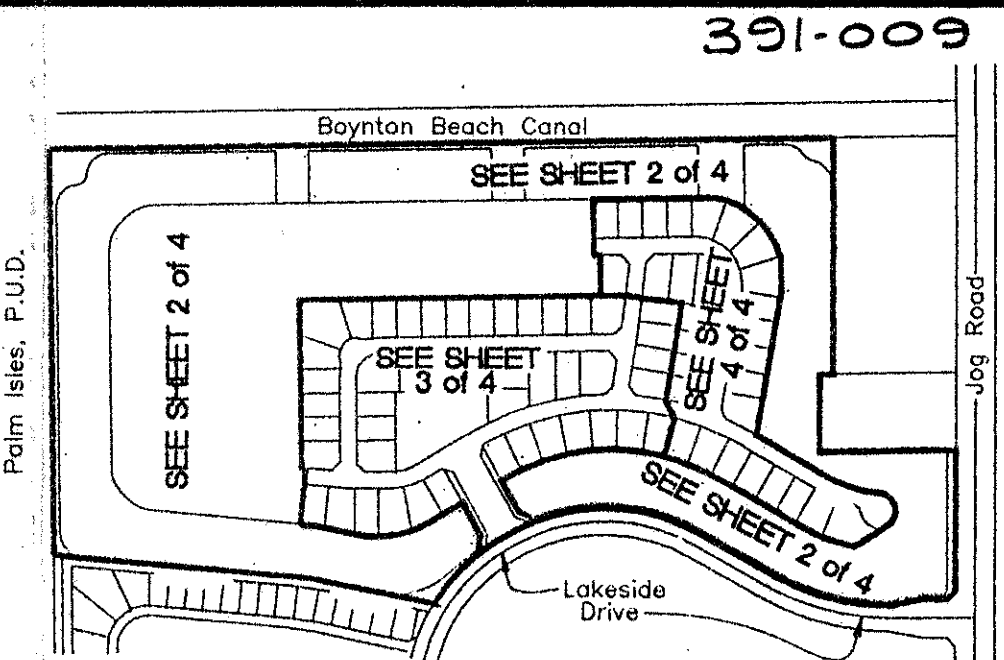


(IN FEET)
Scale 1 inch = 100 feet

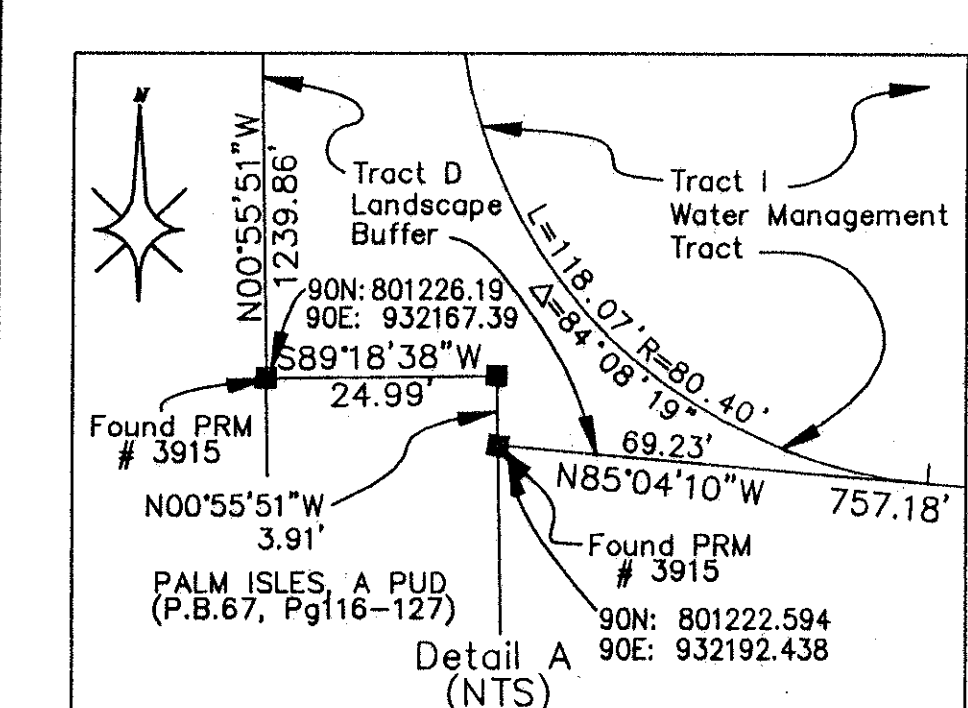
Sheet 2 of 4

68

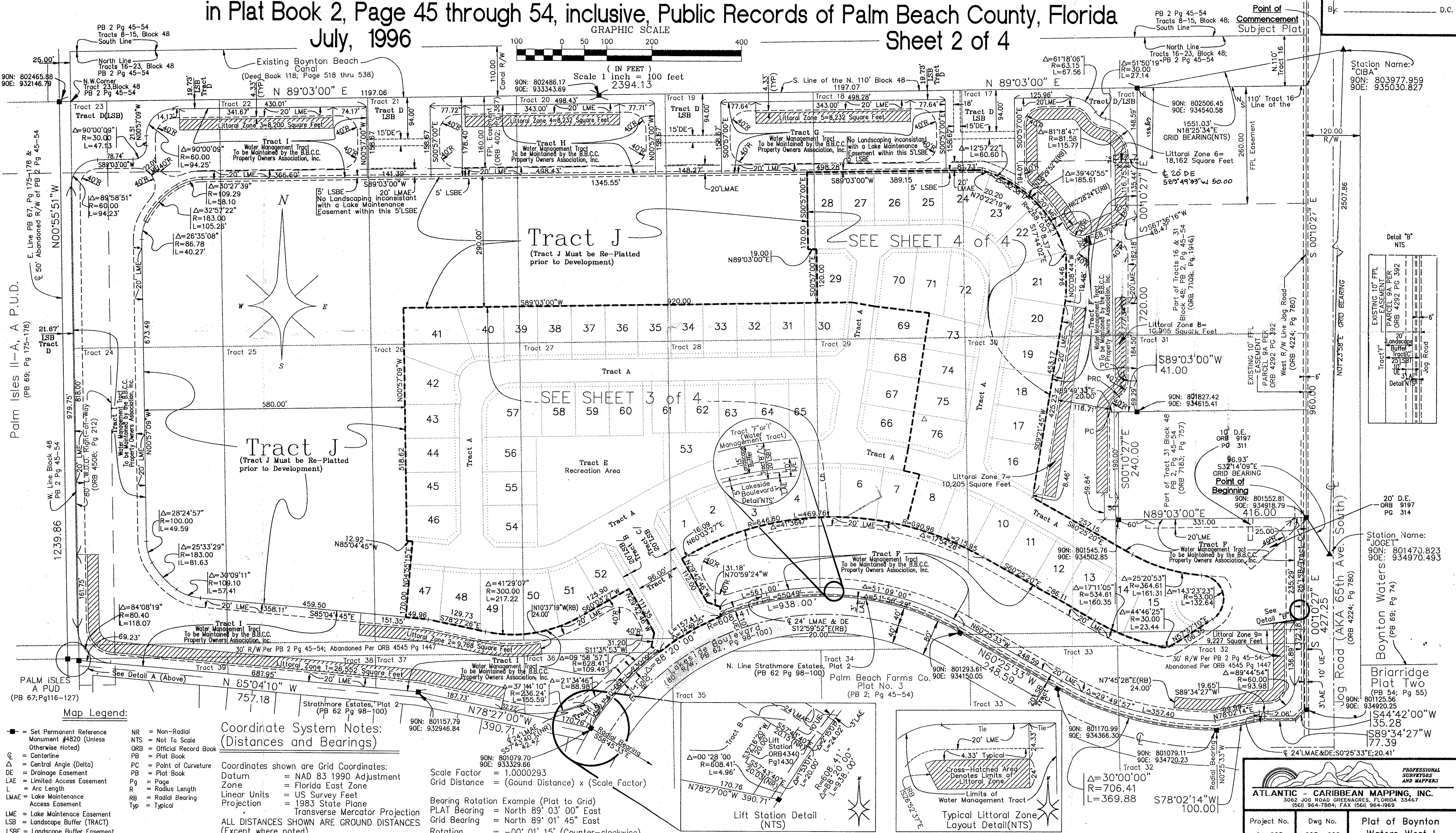
STATE OF FLORIDA
COUNTY OF PALM BEACH
This plat filed for record at _____
this _____ day of _____
19____ and duly recorded in Plat
Book _____ on page _____
DOROTHY H. WILKEN, CLERK of the
Circuit Court.
By: _____ D.C.



Sheet Index Map
N.T.S.



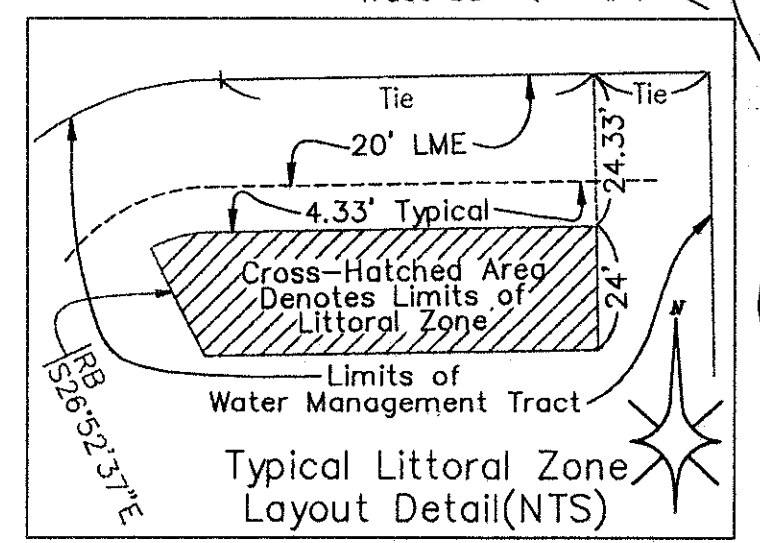
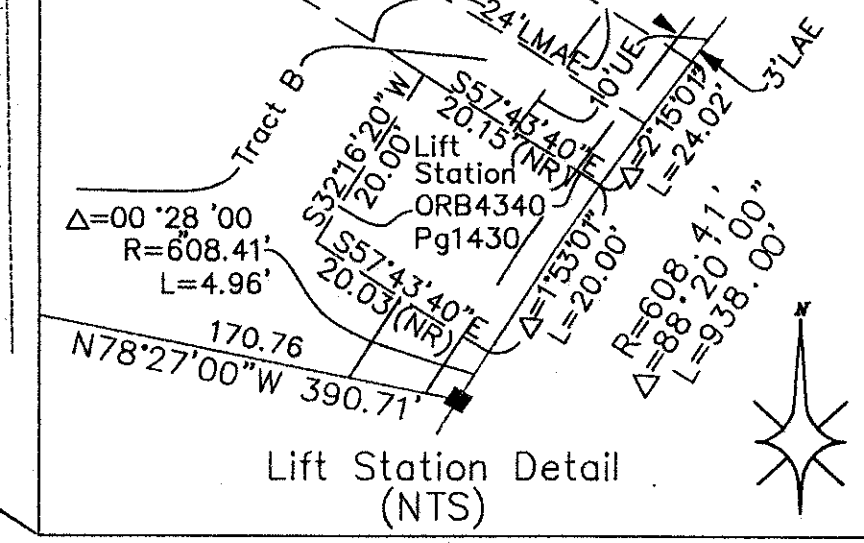
Detail A
(NTS)



- Map Legend:**
- = Set Permanent Reference Monument #4820 (Unless Otherwise Noted)
 - = Central Angle (Delta)
 - DE = Drainage Easement
 - LAE = Limited Access Easement
 - L = Arc Length
 - LMAE = Lake Maintenance Access Easement
 - LME = Lake Maintenance Easement
 - LSB = Landscape Buffer (TRACT)
 - LSCE = Landscape Buffer Easement
 - NR = Non-Radial
 - NTS = Not To Scale
 - ORB = Official Record Book
 - PB = Plat Book
 - PC = Point of Curvature
 - PB = Plat Book
 - Pg = Page
 - R = Radius Length
 - RB = Radial Bearing
 - Typ = Typical

Coordinate System Notes:
(Distances and Bearings)
Coordinates shown are Grid Coordinates:
Datum = NAD 83 1990 Adjustment
Zone = Florida East Zone
Linear Units = US Survey Feet
Projection = 1983 State Plane Transverse Mercator Projection
ALL DISTANCES SHOWN ARE GROUND DISTANCES (Except where noted)

Scale Factor = 1.0000293
Grid Distance = (Ground Distance) x (Scale Factor)
Bearing Rotation Example (Plat to Grid)
PLAT Bearing = North 89° 03' 00" East
Grid Bearing = North 89° 01' 45" East
Rotation = -00° 01' 15" (Counter-clockwise)



ATLANTIC - CARIBBEAN MAPPING, INC.
3062 JOE ROAD GREENACRES, FLORIDA 33467
(800) 364-7884; FAX (561) 364-1963

Project No. 94-023	Dwg No. 023_p002	Plat of Boynton Waters West I
-----------------------	---------------------	----------------------------------

SUBDIVISION - BOYNTON WATERS WEST I
 BOOK 78 PAGE 68
 FLOOD MAP # 1657A
 FLOOD ZONE B
 ZONING R1S/R5
 QUAD # 35
 BE 83-58
 PUD NAME LAKES OF BOYNTON BEACH
 TAZ - 448

0391-009 78-68 Plat 83-58